

FURUTECH

PURE TRANSMISSION



e-TP66 AC Power Distributor

Slimline Power Series



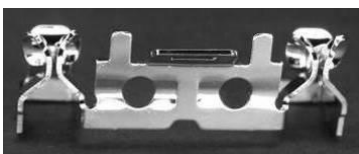
Type: 2-Pole + Earth • Rating: 15A 125V AC

Furutech's Award-Winning Pure Transmission Build Quality

Total Attention to Detail and Build Quality

Many A/V enthusiasts go to great lengths to carefully set up major system components, but pay little attention to the source, the AC power. Furutech knows that each and every part of the chain is as important as the next, so maximum attention is lavished by Furutech on *all* aspects of AC power transfer.

The specially crafted high grade aluminum chassis effectively shields against another common problem, RFI (Radio Frequency Interference). Internal wiring is Furutech μ -14, 2.0 sq. mm (14 AWG) guaranteeing low electrical resistance. Furutech FPX(R) 20A high performance rhodium-plated receptacles are wired to a high performance FI-06(R) IEC. The receptacles feature non-magnetic rhodium-plated phosphor bronze conductors for stable, long lasting, optimized power transfer.



The e-TP 66 will allow the delicacy, refinement and nuance of a performance through, along with micro- and macro-dynamics that will leave you breathlessly engaged. Displays of all types will exhibit greater, sharper resolution with less ghosting, color shift, "snow", or vertical and horizontal lines.

Features:

- Beautifully-crafted special design and high grade aluminum chassis
 - Effectively shields against RFI (Radio Frequency Interference)
- Internal wiring: Furutech μ -14 conductor at 2.0 sq. mm (14 AWG)
 - Guarantees low electrical resistance
- Pure Transmission FPX(R) 20A high performance rhodium-plated receptacles
 - Wired to high performance FI-06(R) IEC inlet
 - Special damping material set under duplex receptacle
 - Non-magnetic rhodium-plated phosphor bronze, conductors for stable, long lasting, optimized power transfer

ALL metallic parts used in Furutech products go through the Alpha Process treatment to keep all connectors, conductors, and metal parts in a perfect stress-free, stable and highly conductive state.

Electrical Specifications:

TYPE	e- TP 66	TYPE	e- TP 66
SPECIFICATION		SPECIFICATION	
RATING	125V AC 50/60Hz	MOVEMENT TEMP.	-10C~40C
CURRENT	15 A	PRESERVATIVE TEMP.	-20C~50C
OUTLETS	6 Outlets	BODY MATERIAL	AL. ALLOY
OUTWARD SIZE	416 L x 65.5 W x 45.5 H mm	WEIGHT (Net.)	0.84 Kg

Make A More Powerful Connection with Furutech!
FURUTECH CO., LTD • service@furutech.com • www.furutech.com

Product name	Product Introduction	JAN CODE
e-TP66(R)	High Performance AC Power Distributor	4580370443387
e-TP66(G)	High Performance AC Power Distributor	By Request