



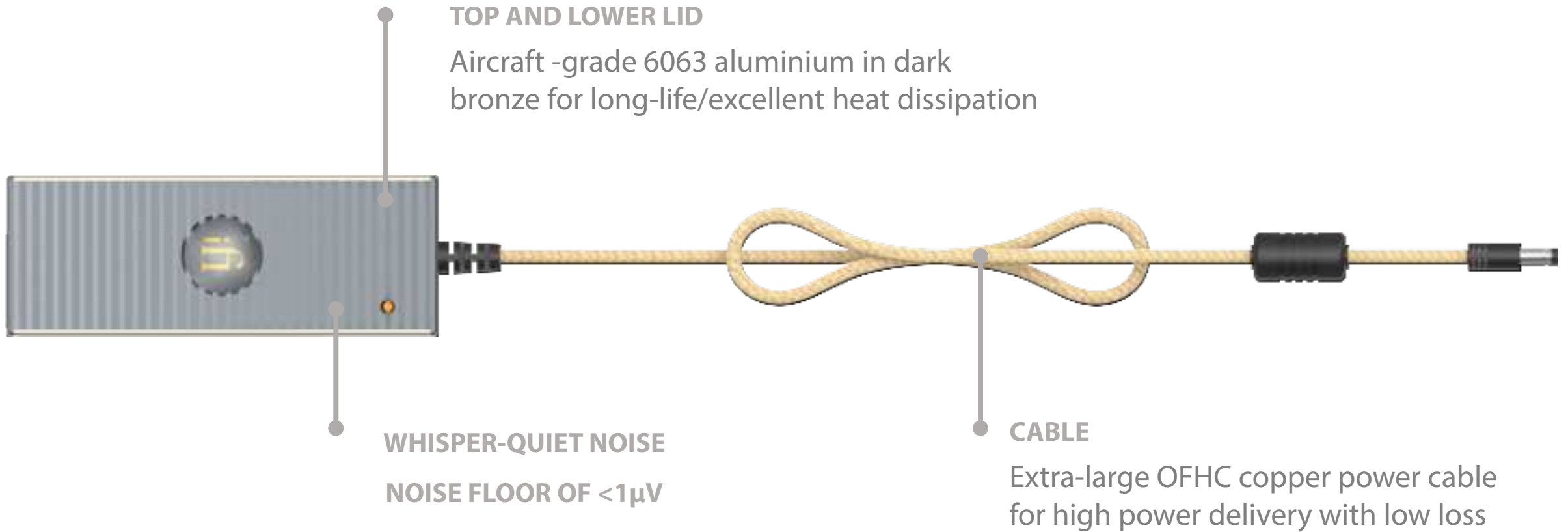
ifi

**iPower Elite Lowdown**

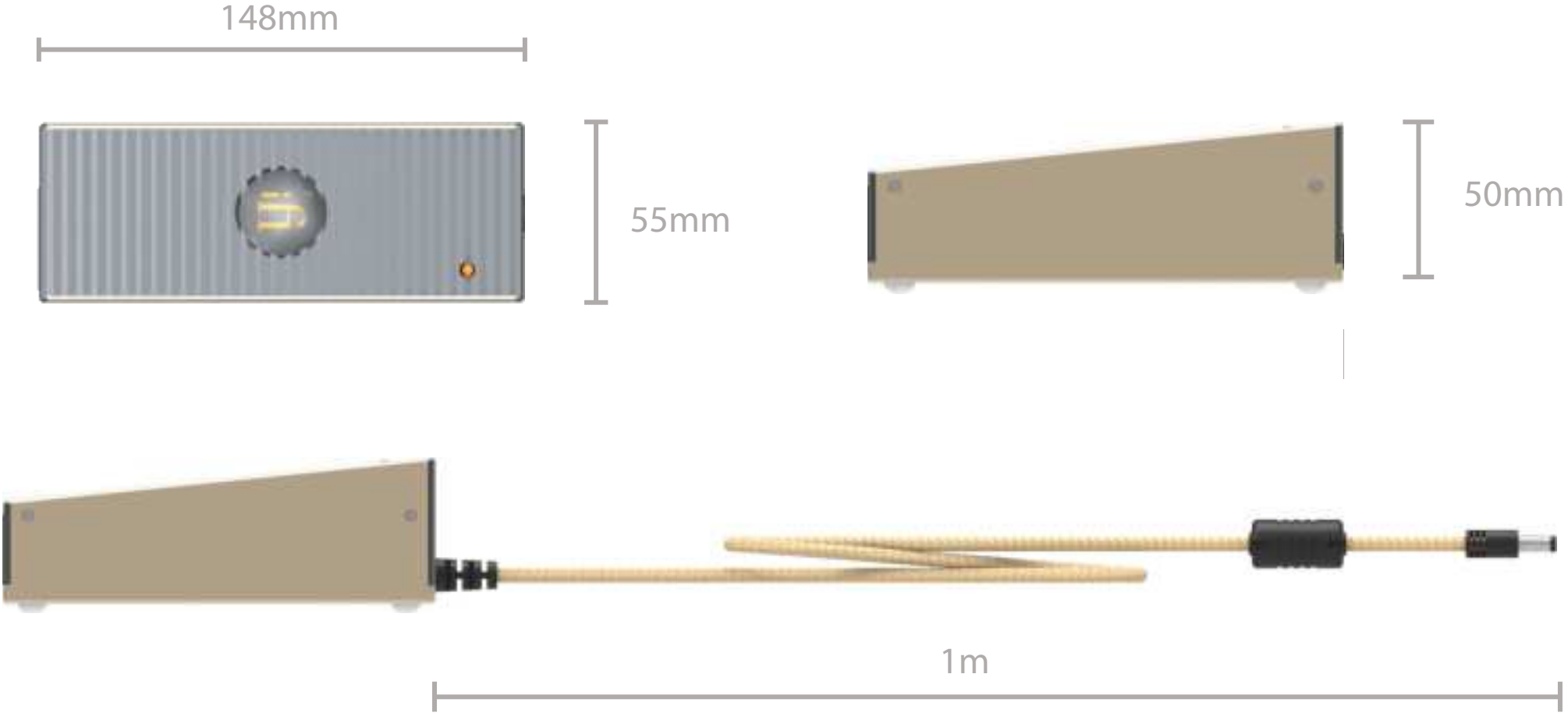
*iPOWER ELITE*



# PARTS AND PERFORMANCE



# MEASURES

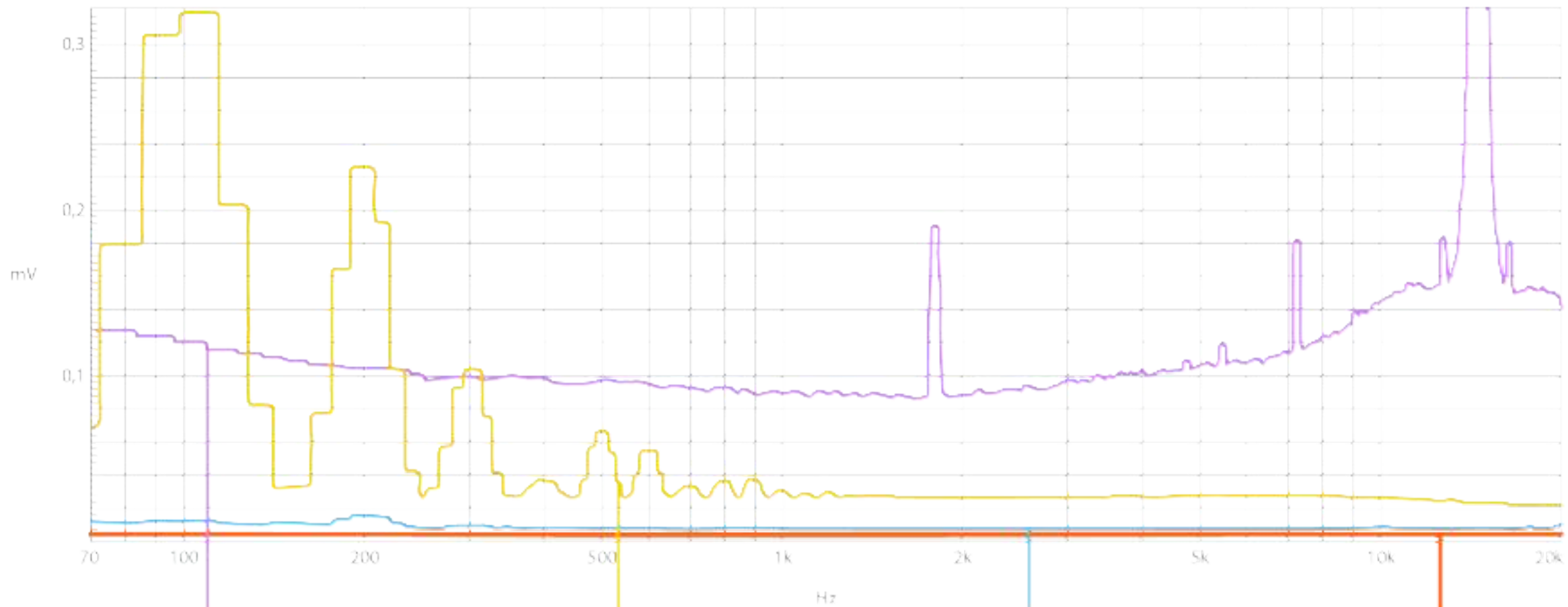


# CIRCUIT PERFORMANCE

Advanced circuits beneath the **<1 $\mu$ V noise floor:**

- Active noise Cancellation II
- Audiophile transformer specially developed for the Elite
- Large aluminium conductive polymer capacitors
- Enlarged input/output capacitance
- 30% extra headroom for instant power delivery for exceptional transients
- Noise-free adaptive multi-mode controller





# AUDIO BAND NOISE FLOOR

<1 $\mu$ V | iFi iPower Elite

100 $\mu$ V | Audiophile Linear Power Supply (LPS)

1000 $\mu$ V | Generic Power Supply

Noise floor is the random noise and excl. AC mains related components and switching freq (<30 $\mu$ V).



**1  $\mu$ V**



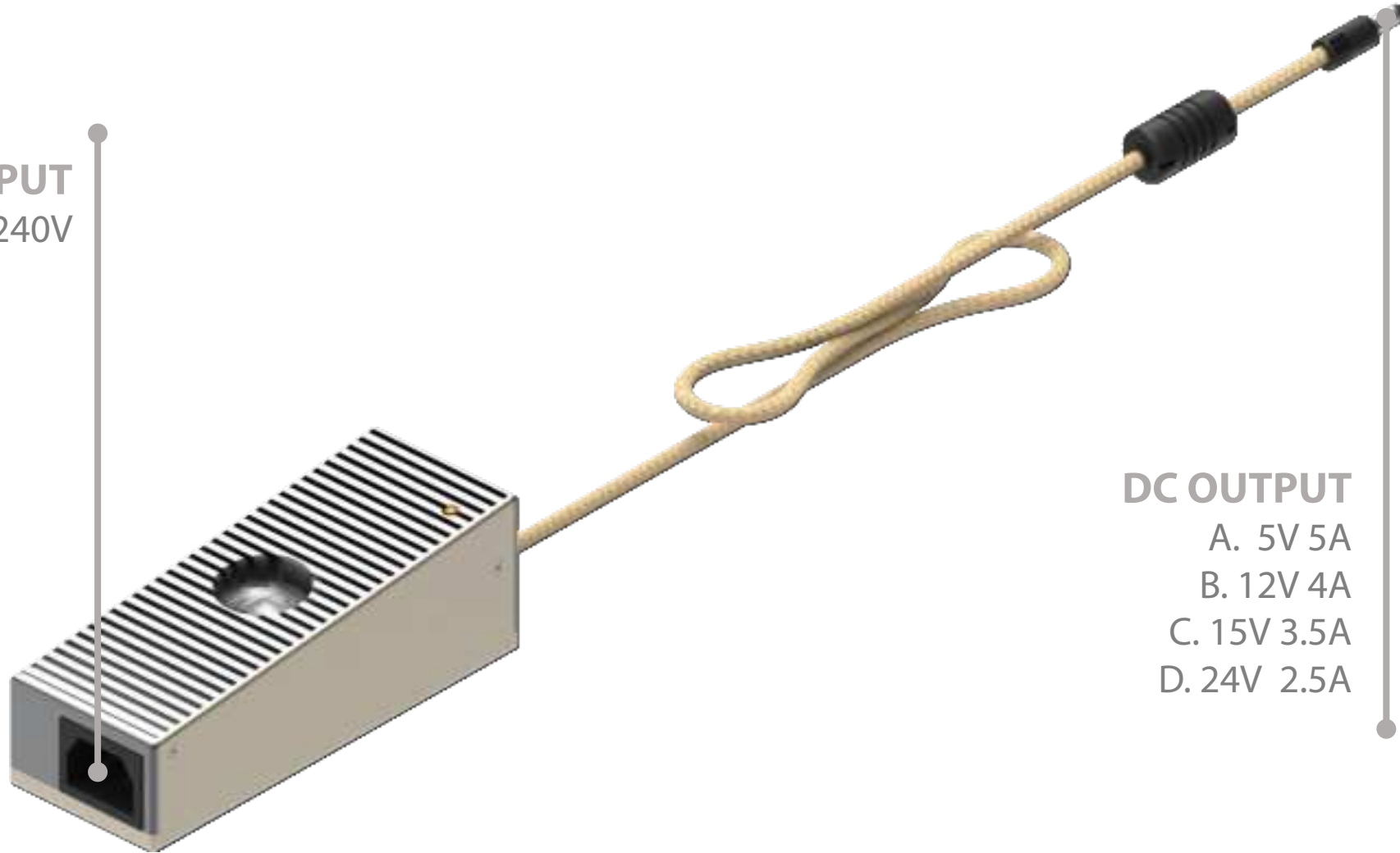
# SPECIFICATIONS

<b>Input</b>	100-240VAC (50-60Hz/1.5A)
<b>Output</b>	5V/5.0A; 12V/4.0A; 15V/3.5A; 24V/2.5A
<b>Output plug</b>	5.5x2.5mm Reverse Polarity Plug (White)
<b>Noise floor</b>	~1uV
<b>Dimensions</b>	148 x 55 x 50 mm / 5.8" x 2.2" x 1.3"
<b>Weight</b>	550 g (1.2 lbs)
<b>Warranty period</b>	12 months

\*Specifications are subject to change without notice

# INPUT / OUTPUT

**AC INPUT**  
100V-240V



**DC OUTPUT**  
A. 5V 5A  
B. 12V 4A  
C. 15V 3.5A  
D. 24V 2.5A

The image features a dynamic, multi-colored powder explosion against a white background. The colors include bright yellow, orange, red, magenta, and blue, all radiating from a central point. The powder particles are captured in mid-air, creating a sense of movement and energy. In the center of this colorful burst, the lowercase letters 'if' are printed in a clean, white, serif typeface. The 'i' has a distinct dot, and the 'f' has a classic, slightly curved top and a thin vertical stem. The overall composition is balanced and visually striking due to the contrast between the vibrant colors and the white text and background.

if